



# **MANAGING MEDIA & TECHNOLOGY IN THE CLASSROOM**

**PREPARED BY ROBIATUL ADAWIYAH BT BAKAR**



# LEARNING OBJECTIVES

**AT THE END OF THIS TOPICS, YOU SHOULD BE ABLE TO:**

- DESCRIBE HOW TO MANAGE A PRESCHOOL CLASSROOM
- KNOW THE GUIDELINES IN THE SET UP A CLASSROOM EQUIPPED WITH ICT

# INTRODUCTION

Before using technology with young children, must determine where to allocate computers, how to connect the different parts, set guidelines for use and introduce these tools to youngsters



# What is classroom management?

Refers to all things that a teacher does to organize students, space, time and materials so instruction in content and student learning can take place.



# Characteristics of a well-managed classroom

- Student are deeply involved in their work
- Student know what is expected of them and are generally successful
- There is relatively little wasted time, confusion, or disruption
- The climate of the classroom is work-oriented but relaxed and pleasant

# Media in learning environment



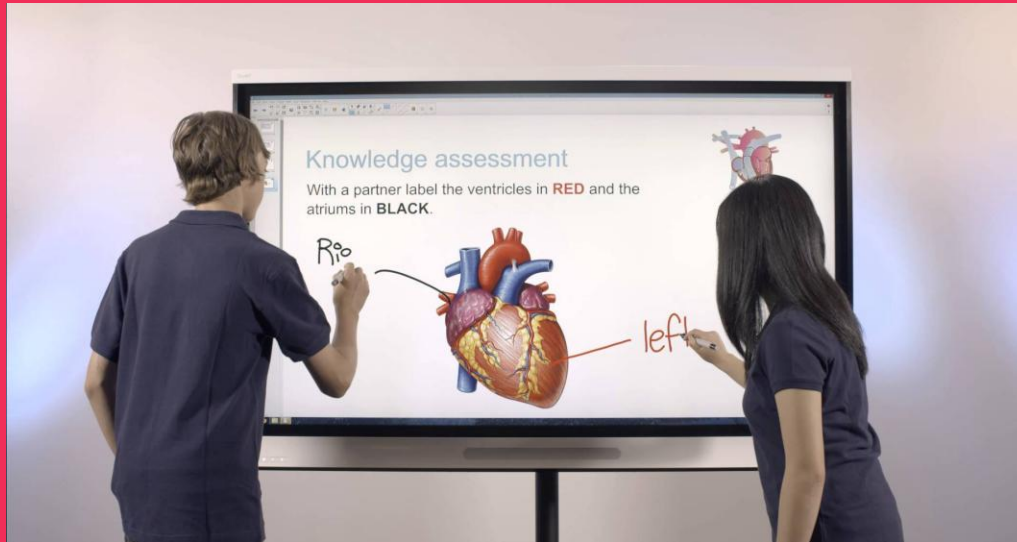
- Power Point Presentation



# Media in learning environment



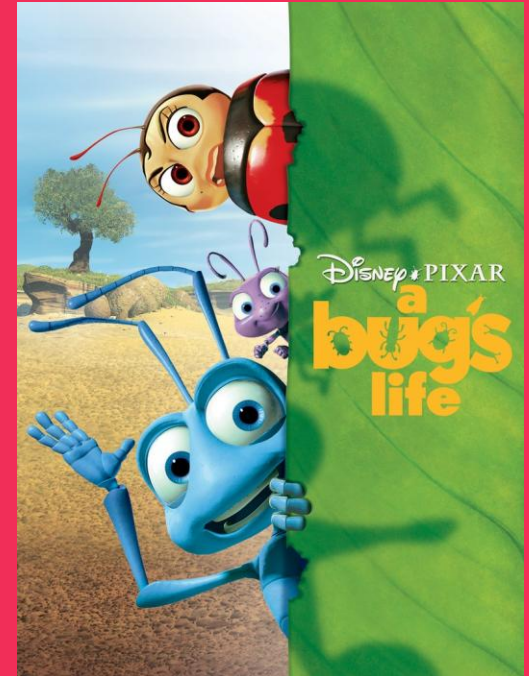
- SMART Board-writedown words and explain using animated technology



# Media in learning environment



- Show movie that are related to learning matter

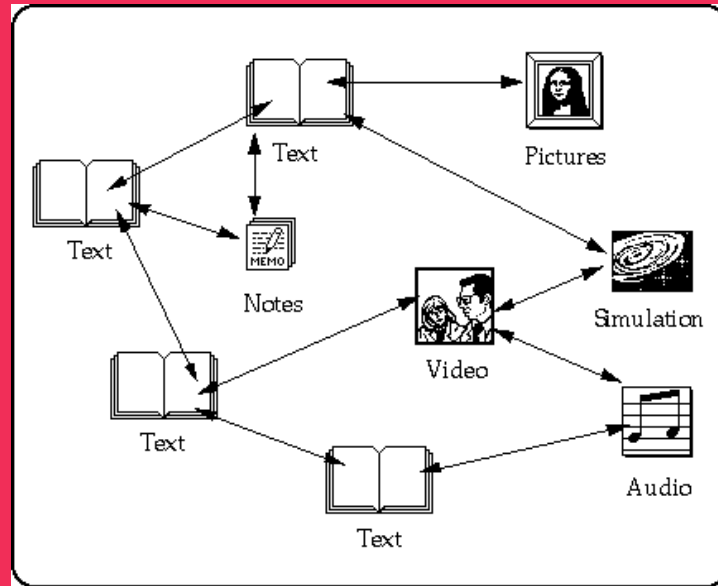




# Media in learning environment



- Hypermedia-allows children to manipulated their environment



# Organizing the classroom-computer learning center

Computer learning center arrangement offers maximum opportunities for most preschool and kindergarten groups





# Classroom computer center location

- The organization of physical environment can maximize children's learning

- The broad guidelines for the computer learning center are similar to those of other learning center



# Guidelines in set up ICT for preschool classroom

Safety

Traffic pattern

Lighting

Equipment care

Noise level

Furniture

Printer location

Security



# 1. Safety

- Place the computer against a wall with an electrical outlet easily accessible
- It will prevent the children from tripping over the numerous power cords and cables
- Manufacturers design computer furniture with storage for the cables and cords





## 2. Equipment care

- Keep materials such as paint, water, sand and food away from your computer
- If spilled these materials maybe harmful to the operation of the computer
- Computer software programs are stored on magnetic media disks and proximity to a magnet can damage the software



# 3. Lighting

- Place computer to avoid glare from the sun coming through the windows or the overhead lights

- To check glare on the computer monitor screen, sit in the child's chair and look at the screen from the child's height





## 3. Lighting

- Some manufacturers offer screen glare guards that can be placed on the monitor to reduce this problem







## 4. Traffic patterns

- The prevalent placement for the computer is away from direct traffic
- However some teachers find it easier to integrate the computer with other learning centers if it is more centrally located



## 4. Traffic patterns

- Central location offers passers by a chance to comment on what the partners are doing at the computers.



## 5. Noise level

- Need to place the computers away from noisy classroom activities because of voice support children require
- Noisy activities may interfere with children hearing voice feedback and instruction from computer



## 5. Noise level

- Computer feedback, music and audio don't disturb children who are trying to engage in quiet activity-reading
- If needed, use headphones





## 6. Printer location

- Printer must be visible and accessible to the children
- Keep it within the children's safe reach
- Easy access to the printer helps children independently retrieve completed printout



# 7. Furniture

- selecting appropriate furniture is more complicated-educators see cute, child-sized chairs, colorful





# Following guidelines (Fryer, 1999)

- Make sure that the monitor is at the child's eye level
- Use an adjustable chair so the child's forearms and wrist are parallel to the floor
- Place monitor so the child's head is 16 to 24 inches from the screen
- Install keyboard trays so arm bend comfortably at 90 degree angle



## 8. Security

- Computer furniture often incorporates a locking cabinet that facilitates storing the keyboard, mouse and other peripherals
- It is best to move the entire computer center to a locked room or closet
- Be certain that your furniture has wheels that easily support such movement





A dark, monochromatic background image showing a hand holding a pen, poised to write on a notebook. The lighting is soft, highlighting the texture of the paper and the grip of the pen.

# THANKS!

## Any questions?

You can find me at [adawiyah@kolejfelcra.edu.my](mailto:adawiyah@kolejfelcra.edu.my)



SlidesCarnival icons are editable shapes.

This means that you can:

- Resize them without losing quality.
- Change line color, width and style.

Isn't that nice? :)

Examples:

